



Tablets
Capsules
LCT's
Softgels

Up to 1,200,000 PPH

**Adjustable Angle Ramp
Printer**

One Sided Rotogravure Printing
Multi-Lane Pocket Carrier Bar System

Adjustable Angle Ramp Printer

Rotogravure Printing System for Tablets & Capsules

High-output precision printing system uses edible inks to place logos onto pharmaceutical and confectionary products. Features an adjustable Ramp Feed Angle to optimize feed based on product flow characteristics. Bulk product is fed into the hopper, where each product is efficiently singulated and gravity-fed into carrier bar pockets for precise positioning. The continuous motion, multipleplane carrier bar conveyor feed system exposes the top surface for inspection and printing. Requires compressed air, power & vacuum for operation.

Features

- Multi-lane carrier bar system
- Machine Safety Guarding with interlocks
- Servo based motion with optical encoder position feedback
- Stainless steel sprocket assemblies teamed with precision ground roller chain for precise registration
- Quick-Release Pins for tool-less installation of carrier bars
- Quick product change over
- Adjustable Ramp Feed Angle
- User friendly interface
- Touch-screen adjustments for all inspection and printing parameters
- Programmable settings for up to 50 products
- Low maintenance cost
- Tower light with buzzer

Capabilities

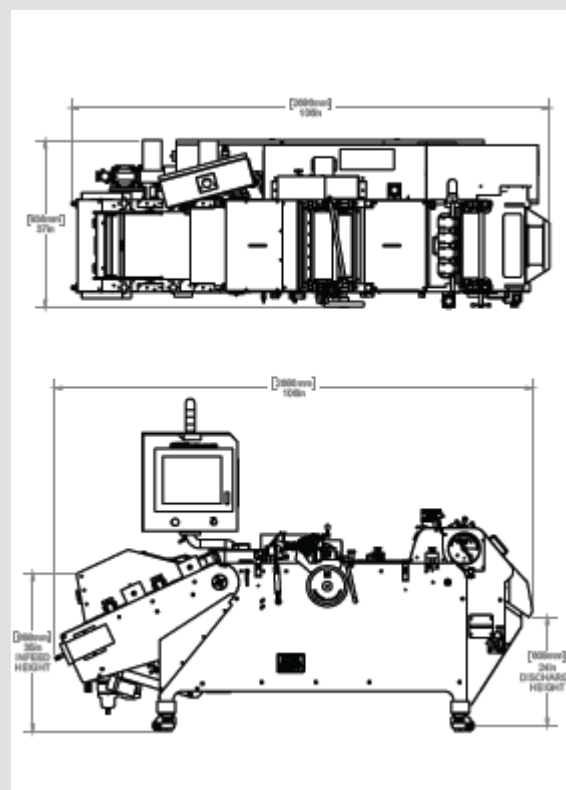
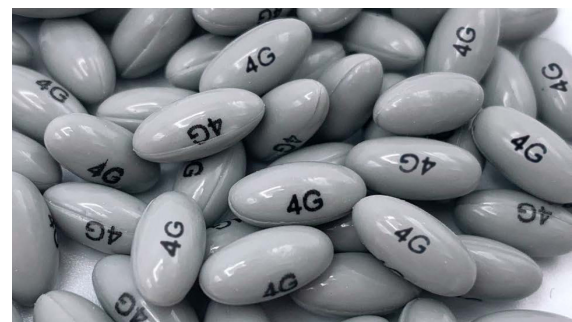
- Output up to 500,000 / hour with inspection; up to 1.2 million / Hour w/o inspection (dependent on product and ink characteristics)
- Single Sided marking using time proven rotogravure printing
- Ability to print alpha-numeric text or graphic logos
- Ability to print with solvent or water based ink solutions

Options

- Vision inspection with vacuumbased single product rejection
- Ink Maintenance System
- OPC-UA Server Gateway
- HMI screen text translated and displayed in language of choice
- Secure remote support capabilities
- Auto-backup of product settings

Safety & Regulatory Compliance

- | | |
|-----------------------------|--------------------|
| • cGMP for Pharmaceuticals: | • NFPA 79 |
| FDA 21 CFR Compliance: | • IEC / EN 60204-1 |
| - Part 210 | • ISO 13849-1 |
| - Part 211 | • CRC, c 870 |
| - Part 11 | • CDRH Compliant |
| • CE Compliant | |



Machine Dimensions:
 Height 74" (1869 mm) x Width 106"
 (2686 mm) x Depth 37" (936 mm)
 Infeed Height: 35" (890 mm)
 Discharge Height: 25" (641 mm)
 Weight: 2200 Lbs. (998 kg)
 Power Requirement: 208-240 VAC /
 50-60 Hz / 3 Phase / 20 Amp
 Compressed Air: 100 PSI (6.9 Bar) @
 70 sCFM (120 m3/hr.)
 Vacuum Requirement: 208-240 VAC /



Made in the USA