

**Tablets  
Capsules  
LCT's**

# LDI System

## Laser Drill Hole Depth Inspection

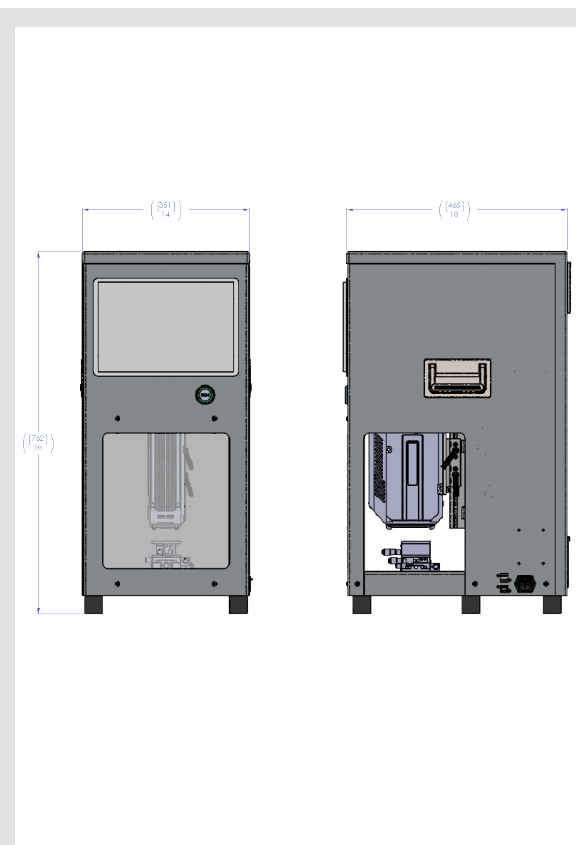
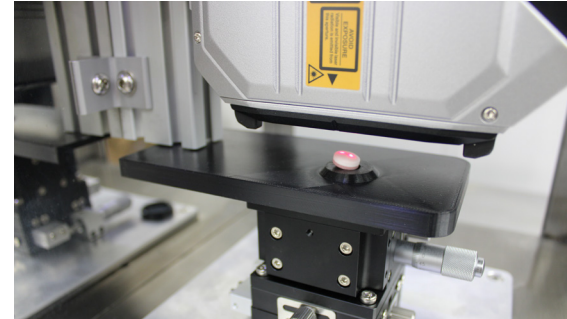
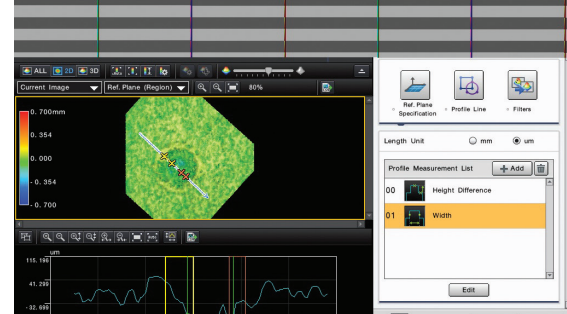
This machine revolutionizes tablet inspection in pharmaceutical manufacturing with unparalleled precision and efficiency. This state-of-the-art device employs advanced laser technology to measure hole depth and diameter with an exceptional accuracy of 0.5 microns. By integrating seamlessly into existing production lines, it offers a non-destructive, rapid, and highly accurate method for quality control, ensuring consistent product performance and regulatory compliance while eliminating human error.

## Features

- Ultra-precise inspection: 0.5 micron accuracy for hole depth and diameter measurement
- Superior hole uniformity assessment
- Fast: Potential for inline integration with high-speed inspection rates
- Safe: Non-destructive testing preserves product integrity
- Reliable: Eliminates human error in identifying hole start and end points
- Accurate: High-resolution 3D imaging for precise hole measurement
- Efficient: Increased inspection rate up to 10% of tablets vs. 2% with manual inspection
- Versatile: Compatible with various machines and tablet types
- Data-driven: Exportable logs and 3D models for comprehensive analysis

## Safety & Regulatory Compliance

- |                                   |                    |
|-----------------------------------|--------------------|
| • cGMP for Pharmaceuticals:       | • NFPA 79          |
| FDA 21 CFR Compliance:            | • IEC 60825-1      |
| - Part 210                        | • IEC / EN 60204-1 |
| - Part 211                        | • ISO 13849-1      |
| - Part 11                         | • CRC, c 870       |
| - Part 1040: Class 1 Laser System | • CDRH Compliant   |
| • CE Compliant                    |                    |



Machine Dimensions:  
 Height 55" (1393 mm) x Width 25"  
 (643 mm) x Depth 32" (825 mm)  
 Infeed Height: 56" (1422 mm)  
 Weight: 500 Lbs. (227 kg)  
 Power Requirement:  
 208-240 VAC / 50-60 Hz /  
 1 Phase / 15 Amp  
 Compressed Air:  
 60 PSI (4.1 Bar) @ 40 sCFM (68 m3/hr.)



**Made in the USA**